

# INTO THE FUTURE

Overture

Stefan Grübl

**Solennemente** ♩ = 100 5

6

12 **14 Dolce** 8 *mf*

25 7

37 *rall.* **39 Tempo di Marcia** ♩ = 120 73

32 *mp* *f*

74

80

86 *p*

92

98 99

*mf*

106

*f*

114 *molto rit.* 119 Tempo I ♩ = 100

*f*

120

126 127

*p*

132 135 Marziale

*p*

137

*mf*

142

*p*

147 149

*f*

152 *poco rit.*

*p* *f*

# INTO THE FUTURE

Overture

Stefan Grübl

Solennemente  $\text{♩} = 100$

5

6

12

14 Dolce 8

mf

25

4

34 Hrn. 2-3 *mp* Play *rall.* *f*

39 Tempo di Marcia  $\text{♩} = 120$  Trb. 1 Play *mp* 6 *mp*

65 5 *mp* 73 *f*

75

81

87 *p*

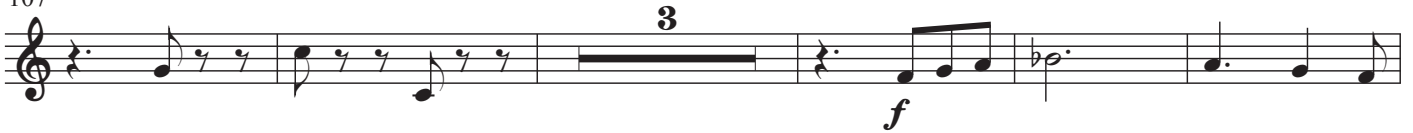
93



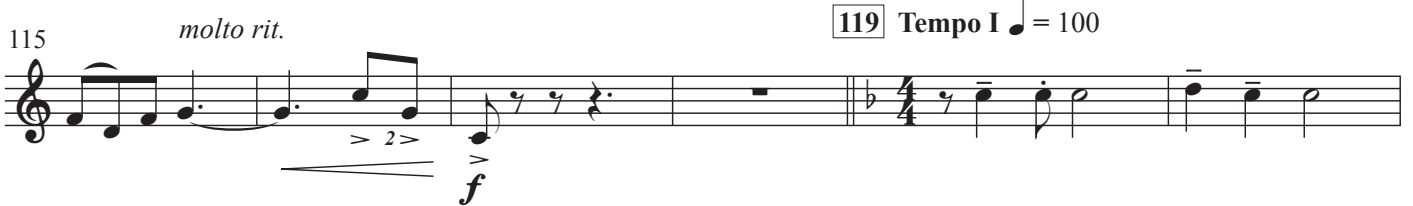
99



107



115



121



127



133



139



145



151



# INTO THE FUTURE

B $\flat$  Trombone 1

Overture

Stefan Grübl

Solennemente  $\text{♩} = 100$

5

6

12

14 Dolce 8

mf

25

4

34 Hrn. 2-3 Play *rall.*

mp *f*

39 Tempo di Marcia  $\text{♩} = 120$

16 6

mp mp

65 6 73

mp *f*

75

81

87

*p*

93



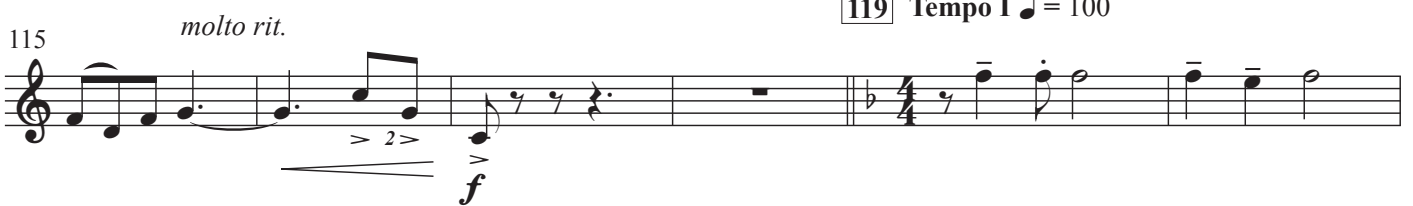
99



107



115



121



127



133



139



145



151

